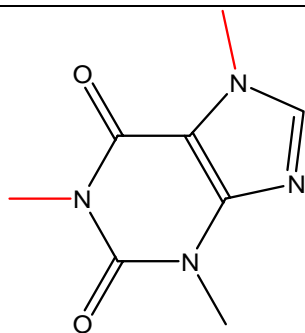
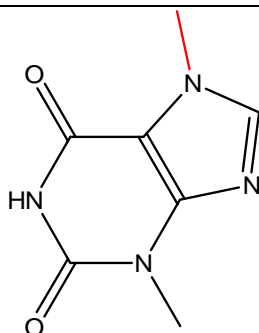


Similar Molecules



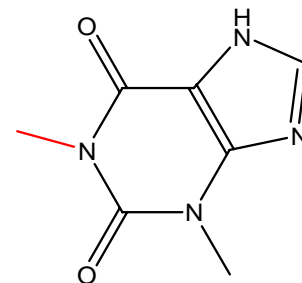
caffeine
C₈H₁₀N₄O₂

found in the leaves and beans of the coffee plant, in tea, and in smaller quantities in seeds, leaves and fruit of 60 other plants



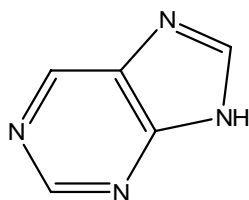
theobromine
C₇H₈N₄O₂

found in cocoa and chocolate

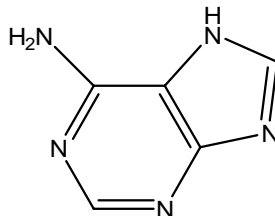


theophylline
C₇H₈N₄O₂

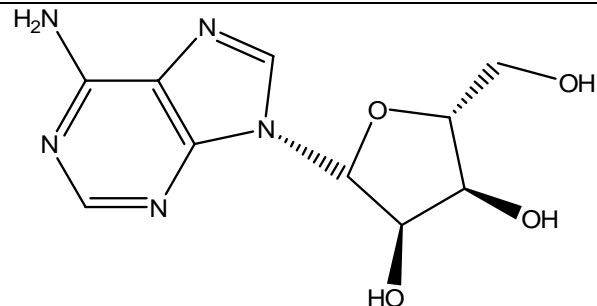
found in black tea and green tea



C₅H₄N₄
9H-purine



adenine
C₅H₅N₅



adenosine
C₁₀H₁₃N₅O₄

the brain's endogenous sleep inducer