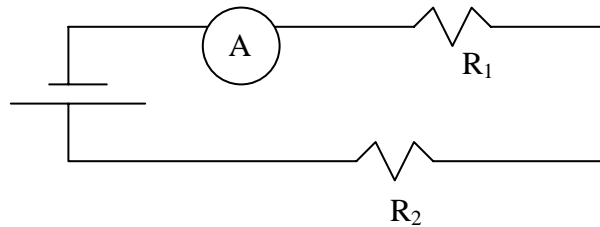


Purpose: In this lab, you will again be assembling a series circuit and a parallel circuit, and noticing how voltage and current vary in such circuits.

Part 1

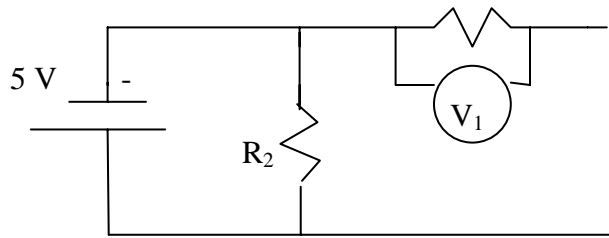
1. Build the following circuit with the voltage set at 5 V.



- a. Measure the current= _____ mA= _____ A
- b. Place the ammeter between R₁ and R₂. Report the current
_____ mA= _____ A
- c. What do you notice? What is going on?

Part 2

1. Build the following circuit.

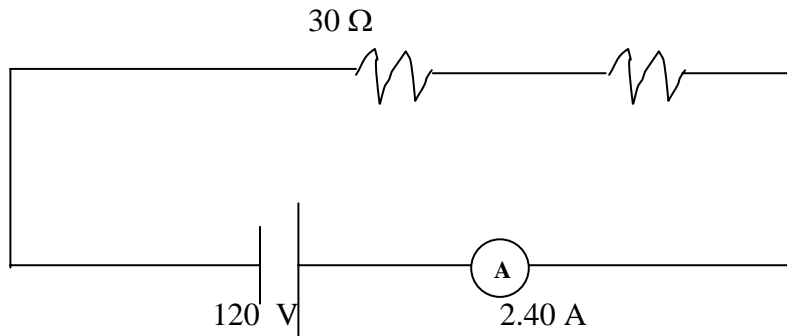


- a. Measure V_1 . Report your answer. _____ V
- b. Now measure V_2 . Report your answer _____ V
- c. How is V_1 related to V_2 ?

Overall Conclusion: (what was learned from both Parts 1 and 1?)

Part 3 Extra Problems to work out. (do in class)

1. Find V_1 and V_2 .



2. What are the readings of ammeter 2 and ammeter 5?

